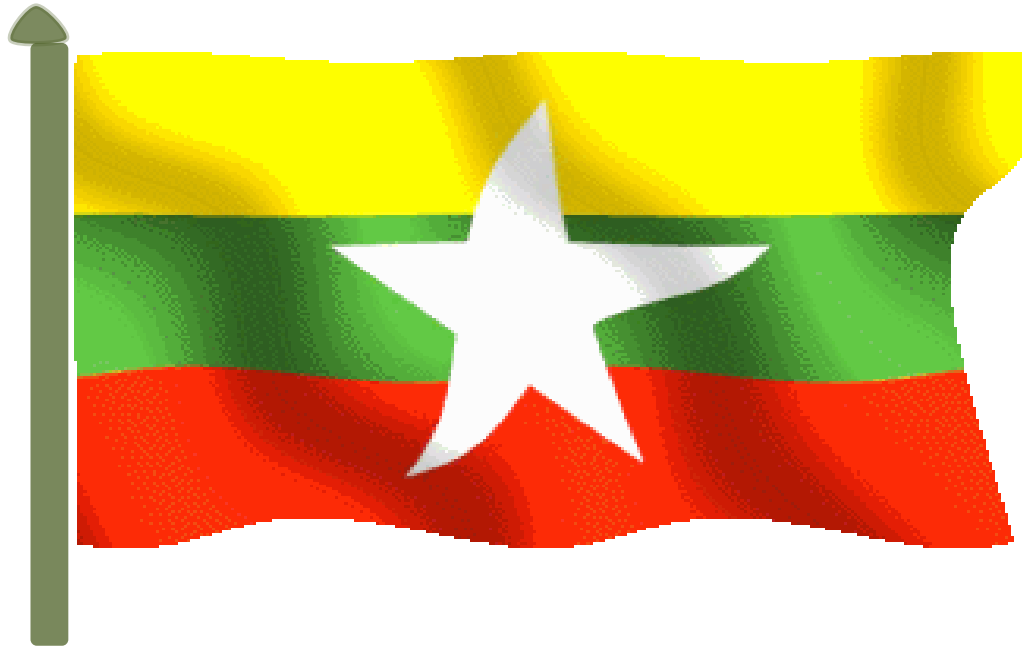


# The Republic of the Union of Myanmar



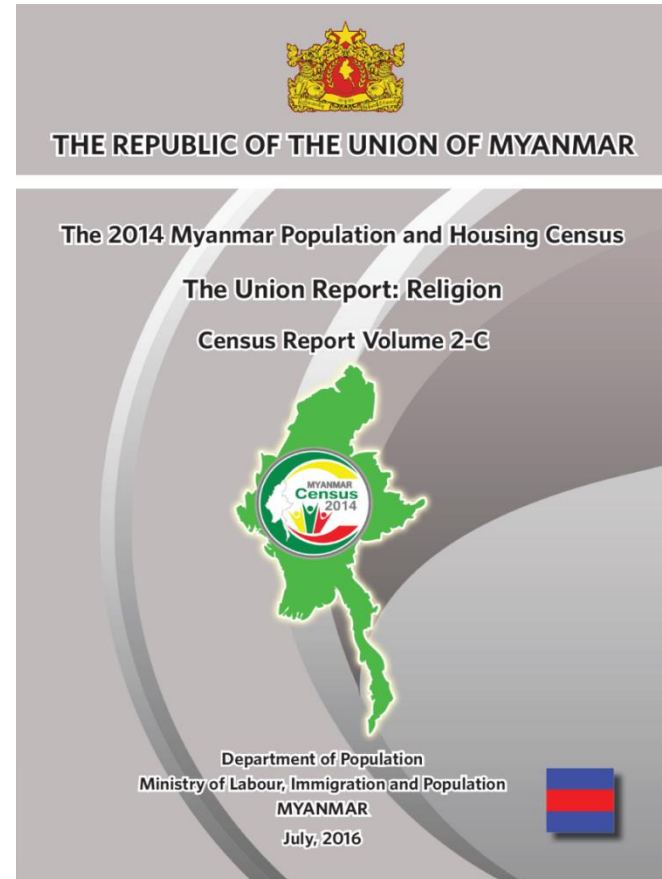
## RELEASE OF 2014 CENSUS DATA ON RELIGION

**Statement by H.E. U Thein Swe, Minister for  
Labour, Immigration and Population  
at the Launch of  
2014 Census Data on Religion  
( Nay Pyi Taw, 21 July 2016 )**

**Mingalabar and welcome to the Launch of 2014  
Census Data on Religion.**



# Main Report, Volume 2 - C RELIGION



Publication in Myanmar and English versions



# Outline



- Background
- Quality Control Mechanisms
- Religion Question in the Census
- Non-enumerated population
- Highlight of the Results
- Trends

# Background

- ❖ Enumeration conducted 30 March-10 April, 2014
- ❖ Almost 98% of all households in Myanmar enumerated
- ❖ 41 questions in questionnaire on demographic, social and household characteristics
- ❖ Census data has been released except for data on religion and data on ethnicity

# Quality Controls Mechanisms

- ❖ Census maps were drawn for each part of the country – no omission and double count
- ❖ Questions were tested to ensure that they were simple and understandable
- ❖ Training of field personal used training guides, role plays and quizzes, all over the country
- ❖ Involvement of international experts at every stage of the census process with rigorous reviews

# Quality Controls Mechanisms

- ❖ Publicity was intensified near the enumeration
- ❖ Administrative structures to ensure all forms went to correct place and all returned to Census Office



# Quality Controls Mechanisms

- ❖ Independent Observation Mission monitored enumeration and prepared a report on their findings
- ❖ Scanning technology applied and ensured that responses of people were captured as reported and data released in record time

REPUBLIC OF THE UNION OF MYANMAR

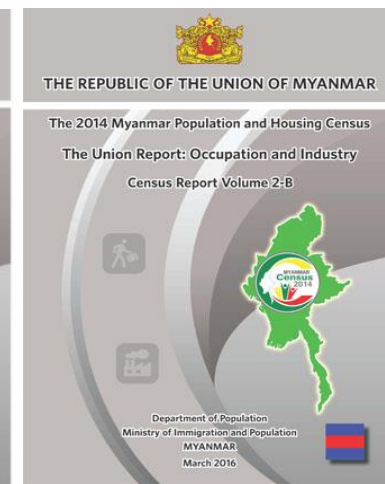
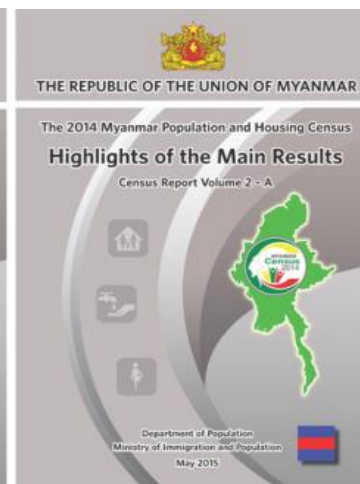
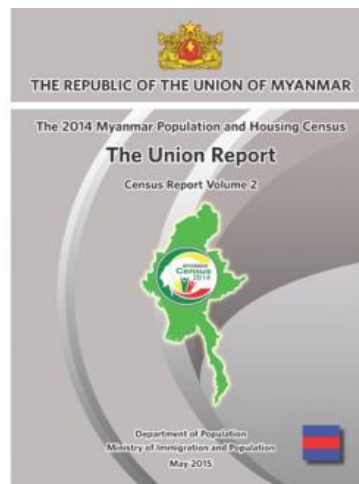
CENSUS OBSERVATION MISSION REPORT  
2014 POPULATION AND HOUSING CENSUS



May 2014

# Publications Released to-date

- Provisional results (Census Volume 1) released in August 2014
- Main Results launched in May 2015
- Main Report on Occupation and Industry released in March 2016



# Publications Released to-date

- Main Results launched in May 2015
  - Union Report, Volume 2
  - Highlights of the Main Report, Volume 2-A
  - 15 State/Region Reports, one for each State and Region, Volume 3 –(1-15)

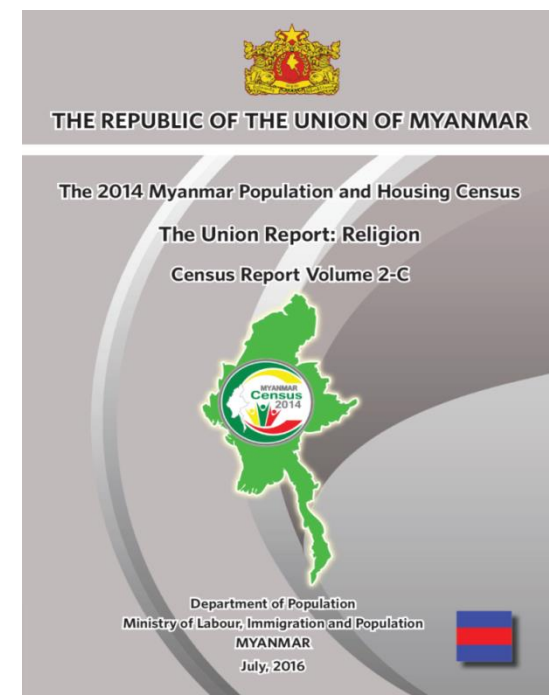


# Publications Released to-date



# Publications

- ❖ This report on “Religion: Census Report Volume 2-C” is part of the Union Report
- ❖ Data on religion was not made available earlier, in consideration of the political changes that were taking place in the country, including the general election, and the subsequent formation of a new Government



# Question on Religion

- Religion question was asked to all conventional households as well as institutional households.
- Question on religion similar to how was asked in last census (1983) for comparison purposes
- Question on religion (2014) phrased as:
  - *What is (NAME'S) religion?*
  - *Response Options: Buddhist/ Christian/ Islam / Hindu/ Animist/ Other religion/ No religion*
- Answers to the questions are written as reported by the respondent

## 7. Religion

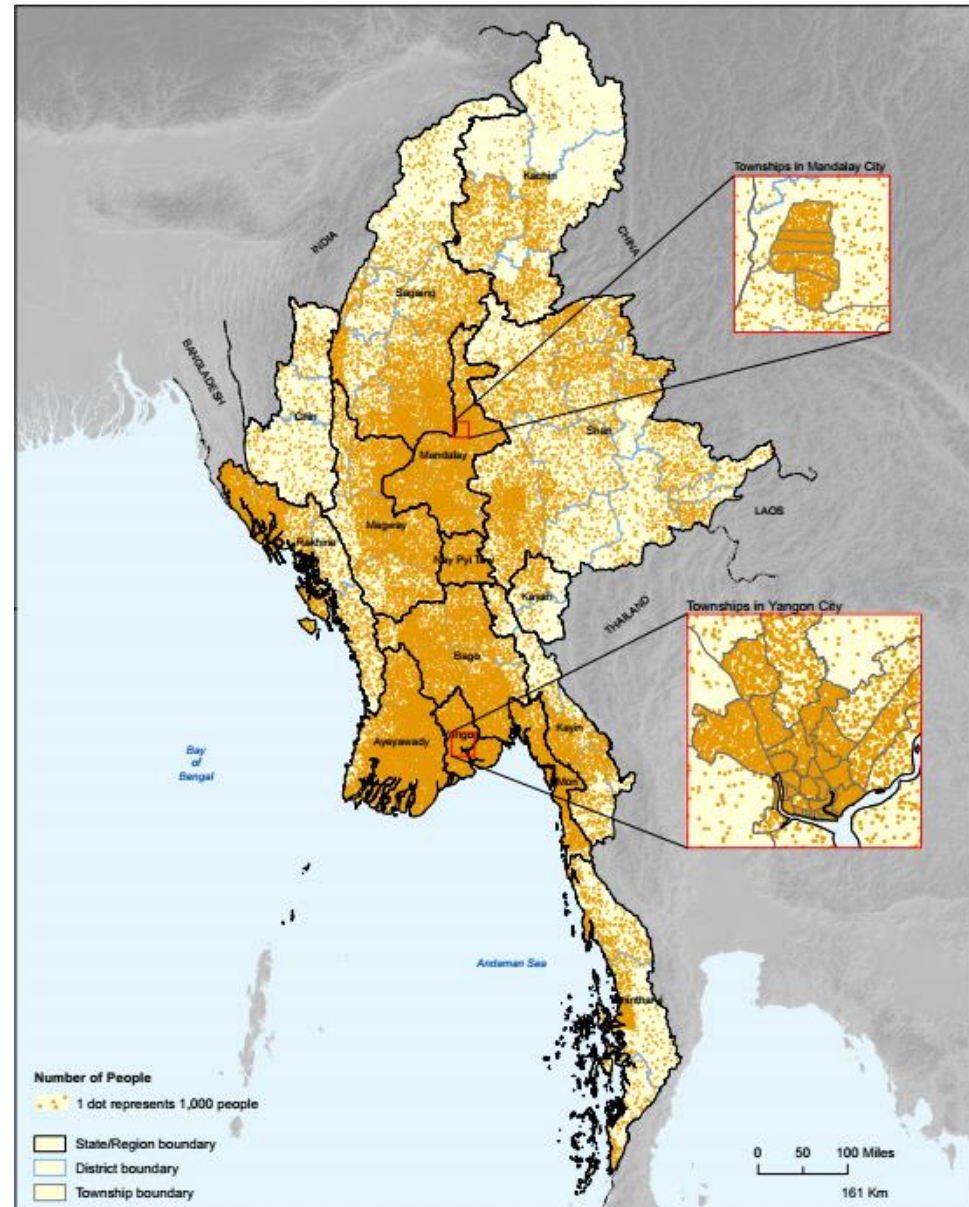
|          |           |       |       |         |                |             |
|----------|-----------|-------|-------|---------|----------------|-------------|
| Buddhist | Christian | Islam | Hindu | Animist | Other Religion | No Religion |
| [ 1 ]    | [ 2 ]     | [ 3 ] | [ 4 ] | [ 5 ]   | [ 6 ]          | [ 7 ]       |

# Non-enumerated populations

- A total of 50,279,900 persons were enumerated in the Census
- The census estimated non-enumerated people as follows:
  - 1,090,000 persons residing in Rakhine State
  - 69,753 persons living in Kayin State ,and
  - 46,600 persons living in Kachin State
  - This represents an estimated total of 1.2 million non-enumerated people, and corresponds to 2.3 per cent of the overall population

# Population Distribution

- When the enumerated population and non-enumerated population are combined, Myanmar's population was 51,486,253 in March 2014
- The reasons for non-enumeration in each State, and the basis of estimates are outlined in the Union Report, Census Report Volume 2



# Effect of non-enumerated population

- ❖ Size of the non-enumerated population in Rakhine State is significant enough to have an impact on the results on religion at both Rakhine State level and Union level
- ❖ Size of the non-enumeration in Kayin and Kachin States have no effect on distribution of religion at Union and respective state

# Effect of non-enumerated population

- ❖ Consequently, the results presented in
  - Part I: Results for enumerated population
  - Part II: Results with considerations regarding non-enumerated populations applies an assumption that the population not enumerated in Rakhine belong to one religious faith (Islamic faith)
- ❖ The estimate of the non-enumerated population is drawn from the mapping data which was collected prior to the census enumeration, and constitute reliable sources

# Results given at what levels

- **Data on Religion are given at Union and State/Region levels because:-**
  - **Released at these levels also advised by both the National Advisory Committee (NAC) and International Technical Advisory Committee (ITAB), as well as Conflict sensitivity team from UNFPA**
  - **Some religious options have few persons at lower administrative units (district and township levels), this will violate data confidentiality of the concerned persons which is against the 2013 Census Law**

# INTERNATIONAL TECHNICAL ADVISORY BOARD



# **HIGHLIGHTS OF THE RESULTS**

# Religion for the Enumerated Population

- At Union level, the breakdown by religious composition of the enumerated population
  - Buddhist - 89.8%
  - Christian - 6.3%
  - Islam - 2.3%
  - Hindu - 0.5%
  - Animist - 0.8%
  - Other religion - 0.2%, and
  - No religion - 0.1%
- These percentages vary by State and Region

| State/Region |        | Total      | Religion   |           |           |         |         |                |             | Estimated Non-enumerated population |
|--------------|--------|------------|------------|-----------|-----------|---------|---------|----------------|-------------|-------------------------------------|
|              |        |            | Buddhist   | Christian | Islam     | Hindu   | Animist | Other religion | No religion |                                     |
| Union        | Number | 50,279,900 | 45,185,449 | 3,172,479 | 1,147,495 | 252,763 | 408,045 | 82,825         | 30,844      | 1,206,353                           |
|              | %      |            | 89.8       | 6.3       | 2.3       | 0.5     | 0.8     | 0.2            | 0.1         |                                     |
| Kachin       | Number | 1,642,841  | 1,050,610  | 555,037   | 26,789    | 5,738   | 3,972   | 474            | 221         | 46,600                              |
|              | %      |            | 64.0       | 33.8      | 1.6       | 0.4     | 0.2     | 0.0            | 0.0         |                                     |
| Kayah        | Number | 286,627    | 142,896    | 131,237   | 3,197     | 269     | 5,518   | 3,451          | 59          |                                     |
|              | %      |            | 49.9       | 45.8      | 1.1       | 0.1     | 1.9     | 1.2            | 0.0         |                                     |
| Kayin        | Number | 1,504,326  | 1,271,766  | 142,875   | 68,459    | 9,585   | 1,340   | 10,194         | 107         | 69,753                              |
|              | %      |            | 84.5       | 9.5       | 4.6       | 0.6     | 0.1     | 0.7            | 0.0         |                                     |
| Chin         | Number | 478,801    | 62,079     | 408,730   | 690       | 106     | 1,830   | 5,292          | 74          |                                     |
|              | %      |            | 13.0       | 85.4      | 0.1       | 0.0     | 0.4     | 1.1            | 0.0         |                                     |
| Sagaing      | Number | 5,325,347  | 4,909,960  | 349,377   | 58,987    | 2,793   | 89      | 2,928          | 1,213       |                                     |
|              | %      |            | 92.2       | 6.5       | 1.1       | 0.1     | 0.0     | 0.1            | 0.0         |                                     |
| Tanintharyi  | Number | 1,408,401  | 1,231,719  | 100,758   | 72,074    | 2,386   | 576     | 567            | 321         |                                     |
|              | %      |            | 87.5       | 7.2       | 5.1       | 0.2     | 0.0     | 0.0            | 0.0         |                                     |
| Bago         | Number | 4,867,373  | 4,550,698  | 142,528   | 56,753    | 100,166 | 4,296   | 12,687         | 245         |                                     |
|              | %      |            | 93.5       | 2.9       | 1.2       | 2.0     | 0.1     | 0.3            | 0.0         |                                     |
| Magway       | Number | 3,917,055  | 3,870,316  | 27,015    | 12,311    | 2,318   | 3,353   | 1,467          | 275         |                                     |
|              | %      |            | 98.8       | 0.7       | 0.3       | 0.1     | 0.1     | 0.0            | 0.0         |                                     |
| Mandalay     | Number | 6,165,723  | 5,898,160  | 65,061    | 187,785   | 11,689  | 188     | 2,301          | 539         |                                     |
|              | %      |            | 95.7       | 1.1       | 3.0       | 0.2     | 0.0     | 0.0            | 0.0         |                                     |
| Mon          | Number | 2,054,393  | 1,901,667  | 10,791    | 119,086   | 21,076  | 109     | 1,523          | 141         |                                     |
|              | %      |            | 92.6       | 0.5       | 5.8       | 1.0     | 0.0     | 0.1            | 0.0         |                                     |
| Rakhine      | Number | 2,098,807  | 2,019,370  | 36,791    | 28,731    | 9,791   | 2,711   | 759            | 654         | 1,090,000                           |
|              | %      |            | 96.2       | 1.8       | 1.4       | 0.5     | 0.1     | 0.0            | 0.0         |                                     |
| Yangon       | Number | 7,360,703  | 6,697,673  | 232,249   | 345,612   | 75,474  | 512     | 7,260          | 1,923       |                                     |
|              | %      |            | 91.0       | 3.2       | 4.7       | 1.0     | -       | 0.1            | -           |                                     |
| Shan         | Number | 5,824,432  | 4,755,834  | 569,389   | 58,918    | 5,416   | 383,072 | 27,036         | 24,767      |                                     |
|              | %      |            | 81.7       | 9.8       | 1.0       | 0.0     | 6.6     | 0.5            | 0.4         |                                     |
| Ayeyawady    | Number | 6,184,829  | 5,699,665  | 388,348   | 84,073    | 5,440   | 459     | 6,600          | 244         |                                     |
|              | %      |            | 92.1       | 6.3       | 1.4       | 0.1     | 0.0     | 0.1            | 0.0         |                                     |
| Nay Pyi Taw  | Number | 1,160,242  | 1,123,036  | 12,293    | 24,030    | 516     | 20      | 286            | 61          |                                     |
|              | %      |            | 96.8       | 1.1       | 2.1       | 0.0     | 0.0     | 0.0            | 0.0         |                                     |

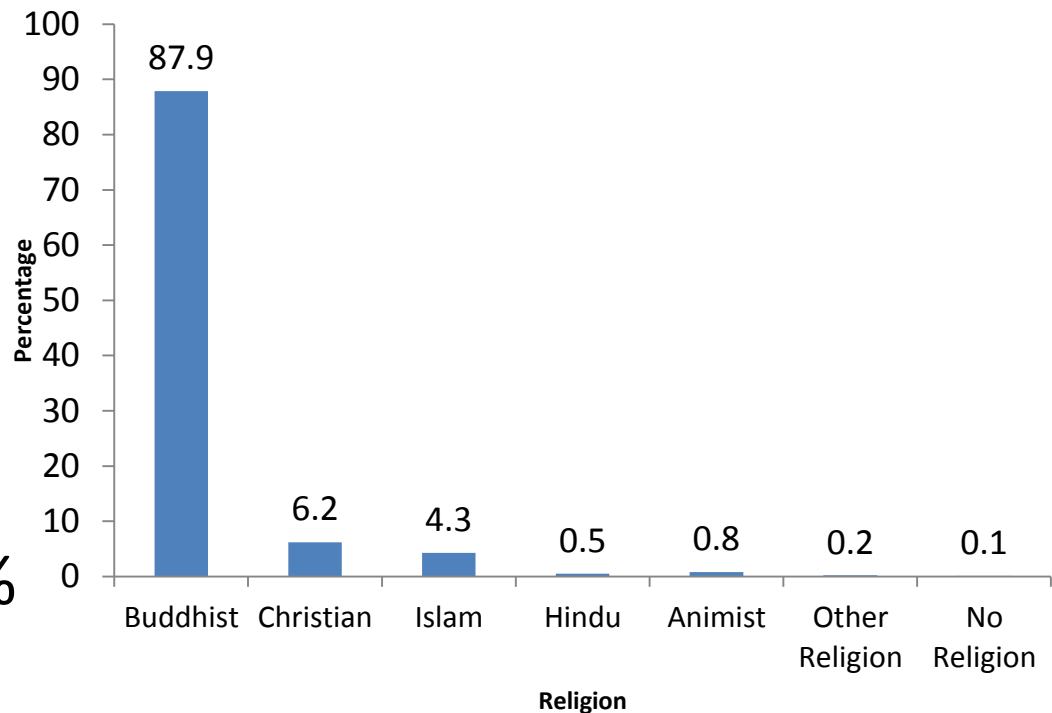
# Results with considerations regarding non-enumerated population

- In Kayin and Kachin States, the size of the non-enumerated population is not significant to change the proportion of religious groups at either Union or State level
- In Rakhine State, the size of the non-enumerated population is significant enough to impact on the proportion of religious groups both at State and Union level
- It is assumed that the non-enumerated population in Rakhine is mainly affiliated with the Islamic faith

# Religion for entire population

- Applying this assumption, distribution of population is as follows:

- Buddhists - 87.9%
- Christians - 6.2%
- Islam - 4.3%
- Hindus - 0.5%
- Animists - 0.8%
- Other religion - 0.2%
- No religion - 0.1%



# Percentage of Population by Religious groups -1973, 1983 and 2014 censuses

| Religion       | Percentage |      |       |
|----------------|------------|------|-------|
|                | 1973       | 1983 | 2014* |
| Union          | 100        | 100  | 100   |
| Buddhist       | 88.8       | 89.4 | 87.9  |
| Christian      | 4.6        | 4.9  | 6.2   |
| Islam          | 3.9        | 3.9  | 4.3   |
| Hindu          | 0.4        | 0.5  | 0.5   |
| Animist        | 2.2        | 1.2  | 0.8   |
| Other Religion | 0.1        | 0.1  | 0.2   |
| No Religion    | **         | **   | 0.1   |

*\*\* is less than 0.1 per cent*

# Concluding remarks

- The release of census data on religion as an insight into the diverse array of traditions, cultures, and faiths that characterize our beautiful country
- These results must be used by all of us in our country and beyond to bring peace and harmony
- Copies of the report are available in print as well as on websites of Department of Population and UNFPA Myanmar
- [www.dop.gov.mm](http://www.dop.gov.mm)

# MEMORIES OF MYANMAR CENSUS 2014



THANK YOU